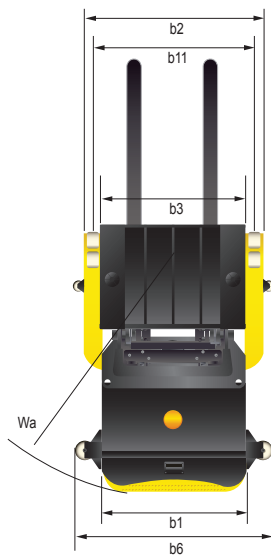
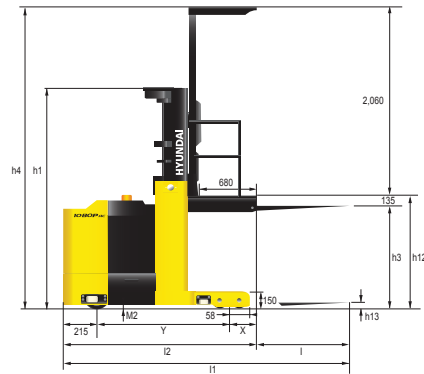


Dimensions



Specifications

■ Identification

| | | | | |
|-----|----------------------------------------------------------------------|--------|--------------|--------------|
| 1.1 | Manufacturer | | HYUNDAI | HYUNDAI |
| 1.2 | Manufacturer's model designation | | 10BOP-7 | 13BOP-7 |
| 1.3 | Power supply (electric, diesel, petrol, gas, manual) | | Electric | Electric |
| 1.4 | Type of operation (hand, pedestrian, standing, seated, order-picker) | | Order picker | Order picker |
| 1.5 | Load capacity / rated load | Q (lb) | 2,205 | 3,000 |
| 1.6 | Load center distance | c (in) | 24 | 24 |
| 1.8 | Load distance, center of drive axle (load wheel) to fork | x (in) | 9.3 | 9.3 |
| 1.9 | Wheelbase | y (in) | 56.3 | 58.3 |

■ Weights

| | | | | |
|-----|-------------------------------------------|----|---------------|---------------|
| 2.1 | Service weight (Inc. battery) | lb | 6,085 | 6,398 |
| 2.2 | Axle loadings laden loaded and unloaded | lb | 2,112 / 6,178 | 1,872 / 7,525 |
| 2.3 | Axle loadings unladen loaded and unloaded | lb | 3,415 / 2,670 | 3,583 / 2,813 |

■ Wheels, Chassis

| | | | | |
|-----|------------------------------------------------|----------|--------------|--------------|
| 3.1 | Tires | | Polyurethane | Polyurethane |
| 3.2 | Tire size drive end | in | 12 x 5.5 | 12 x 5.5 |
| 3.3 | Tire size load end | in | 6.0 x 3.9 | 6.0 x 3.9 |
| 3.5 | Wheels, numbers (x=driven wheels) drive / load | | 1 x / 4 | 1 x / 4 |
| 3.6 | Track width (front) drive end | b10 (in) | 0 | 0 |
| 3.7 | Track width (rear) load end | b11 (in) | 35.8, 43.7 | 35.8, 43.7 |

■ Basic Dimensions

| | | | | |
|------|--------------------------------------------------|--------------|--------------------|--------------------|
| 4.2 | Lowered mast height | h1 (in) | 87.4 | 87.4 |
| 4.4 | Lift height | h3 (in) | 128.9 | 128.9 |
| 4.5 | Height, mast raised (console / overhead guard) | h4 (in) | 215.4 | 215.4 |
| 4.7 | Height to top of overhead guard | h6 (in) | 89.0 | 89.0 |
| 4.8 | Platform height (h13 + 135 mm) | h7 (in) | 7.9 | 7.9 |
| 4.14 | Picking height (h12 + 1,600 mm) | h28 (in) | 197.2 | 197.2 |
| 4.15 | Height lowered (fork height) | h13 (in) | 2.6 | 2.6 |
| 4.19 | Overall length without load | l1 (in) | 121.3 | 123.2 |
| 4.20 | Length to front face of forks | l2 (in) | 74.0 | 76 |
| 4.21 | Overall width of chassis | b1 / b2 (in) | 40.2 / 41.3 (49.2) | 40.2 / 41.3 (49.2) |
| 4.22 | Fork dimensions | s/e/l (in) | 1.6 x 3.9 x 41.3 | 1.6 x 3.9 x 41.3 |
| 4.25 | Overall fork width | b5 (in) | 23.1 / 25.6 / 28.0 | 23.1 / 25.6 / 28.0 |
| 4.26 | Platform width | b3 (in) | 40.2 (49.2) | 40.2 (49.2) |
| 4.27 | Guide roller width | b6 (in) | See chart | See chart |
| 4.32 | Fork clearance, center of wheelbase 2 | m2 (in) | 2.0 | 2.0 |
| 4.33 | Working aisle width, with 31.5 x 47.2 crosswise | Ast (in) | 131.6 | 133.5 |
| 4.34 | Working aisle width, with 47.2 x 31.5 lengthwise | Ast (in) | 136.2 | 138.1 |
| 4.35 | Outer turning radius | Wa (in) | 69.6 | 71.6 |

■ Performance Data

| | | | | |
|------|-----------------------------------|-----|------------------|------------------|
| 5.1 | Speed, loaded / unloaded | mph | 5.9 / 6.2 | 5.9 / 6.2 |
| 5.2 | Lift speed, loaded / unloaded | fpm | 49.2 / 68.9 | 47.2 / 68.9 |
| 5.3 | Lowering speed, loaded / unloaded | fpm | 74.8 / 74.8 | 74.8 / 74.8 |
| 5.9 | Acceleration time (over 10 m) | sec | 7 | 7 |
| 5.10 | Brakes | | Electric release | Electric release |

■ E-Motor

| | | | | |
|-----|-----------------------------------------------|------|----------|----------|
| 6.1 | Drive motor rating S2 = 60 min | kW | 5.2 | 5.2 |
| 6.2 | Lift motor rating at S2 = 15% | kW | 10.6 | 10.6 |
| 6.4 | Battery voltage, capacity K5 | V/Ah | 48 / 300 | 48 / 400 |
| 6.5 | Battery weight 5% (dependent on manufacturer) | lb | 1323 | 1609 |

■ Other Details

| | | | | |
|-----|-----------------------------|--------|----|----|
| 8.1 | Drive control | | AC | AC |
| 8.4 | Noise peak at operator ears | dB (A) | - | - |



Building a better future

FORKLIFT TRUCKS Environmentally friendly

North America Only

10/13BOP-7 AC

HYUNDAI
MATERIAL HANDLING

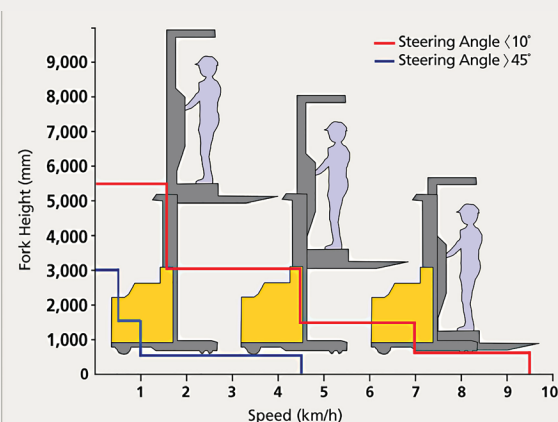
6100 ATLANTIC BOULEVARD NORCROSS GA 30071 U.S.A
TEL (678) 823-7777 / FAX (678) 823-7778

www.hyundaiforkliftamericas.com 2018.04 Rev.2

HYUNDAI
MATERIAL HANDLING

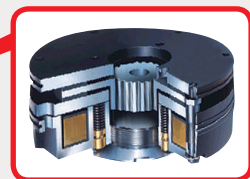
Superior power, optimal performance

The smooth running and ergonomically designed Hyundai 10/13BOP-7 series forklifts are built to meet your needs.



Travel speed control by platform height

Travel speed can be limited by the steering angle - 10° ~ 45°. For enhanced safety, the travel banned height is set at 215 inches.



The electromagnetic brake controller is mounted on the traction motor.

Brake system

The auto brake incorporates spring return force and can be activated during travel.



Minimum turning radius

Suitable for narrow aisle operation, the compact design guarantees work efficiency and maximum space usage.



Mast specifications (10BOP-7)

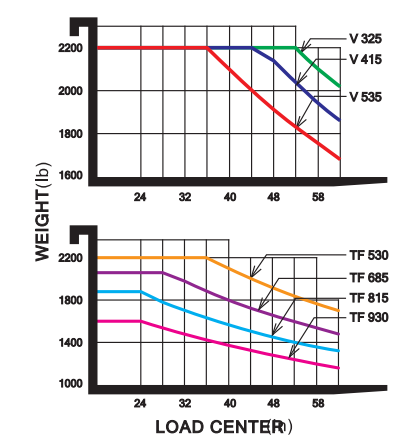
| Mast Type | Maximum Fork Height | Overall Height (Lowered) | Overall Height (Lifted) | Free lift Height | Load capacity without side-shift 24 in LC | Truck Weight (Unloaded) |
|---------------------------|---------------------|--------------------------|-------------------------|------------------|-------------------------------------------|-------------------------|
| | | With OHG | With OHG | With OHG | | |
| | | 10BOP-7 | 10BOP-7 | 10BOP-7 | 10BOP-7 | 10BOP-7 |
| | | in | in | in | lb | lb |
| 2-stage limited free lift | V325 | 128.9 | 87.4 | 215.4 | 0 | 2205 |
| | V355 | 140.7 | 93.5 | 227.2 | 0 | 2205 |
| | V415 | 164.4 | 105.5 | 250.8 | 0 | 2205 |
| | V475 | 188.0 | 117.5 | 274.4 | 0 | 2205 |
| | V535 | 211.6 | 129.3 | 298.0 | 0 | 2205 |
| 3-stage full free lift | TF500 | 199.6 | 87.4 | 286.1 | 1.0 | 2205 |
| | TF530 | 210.8 | 93.5 | 297.2 | 7.1 | 2205 |
| | TF610 | 240.7 | 105.5 | 327.2 | 19.1 | 2205 |
| | TF685 | 270.8 | 117.5 | 357.2 | 31.1 | 2050 |
| | TF760 | 300.8 | 129.3 | 387.2 | 42.9 | 1984 |
| | TF815 | 321.9 | 138.4 | 408.3 | 52.0 | 1852 |
| | TF865 | 341.8 | 147.4 | 428.2 | 61.0 | 1698 |
| TF930 | 367.0 | 158.5 | 453.4 | 72.0 | 1543 | |

Mast specifications (13BOP-7)

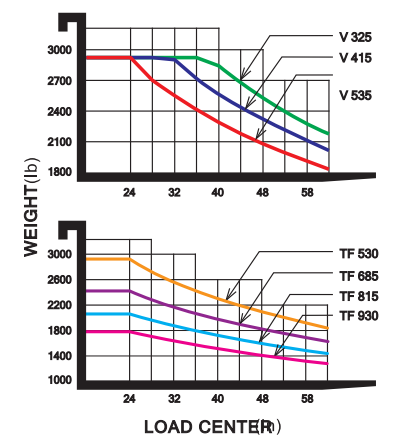
| Mast Type | Maximum Fork Height | Overall Height (Lowered) | Overall Height (Lifted) | Free lift Height | Load capacity without side-shift 24 in LC | Truck Weight (Unloaded) |
|---------------------------|---------------------|--------------------------|-------------------------|------------------|-------------------------------------------|-------------------------|
| | | With OHG | With OHG | With OHG | | |
| | | 13BOP-7 | 13BOP-7 | 13BOP-7 | 13BOP-7 | 13BOP-7 |
| | | in | in | in | lb | lb |
| 2-stage limited free lift | V325 | 128.9 | 87.4 | 215.4 | 0 | 3000 |
| | V355 | 140.7 | 93.5 | 227.2 | 0 | 3000 |
| | V415 | 164.4 | 105.5 | 250.8 | 0 | 3000 |
| | V475 | 188.0 | 117.5 | 274.4 | 0 | 3000 |
| | V535 | 211.6 | 129.3 | 298.0 | 0 | 3000 |
| 3-stage full free lift | TF500 | 199.6 | 87.4 | 286.1 | 1.0 | 3000 |
| | TF530 | 210.8 | 93.5 | 297.2 | 7.1 | 3000 |
| | TF610 | 240.7 | 105.5 | 327.2 | 19.1 | 2668 |
| | TF685 | 270.8 | 117.5 | 357.2 | 31.1 | 2447 |
| | TF760 | 300.8 | 129.3 | 387.2 | 42.9 | 2205 |
| | TF815 | 321.9 | 138.4 | 408.3 | 52.0 | 2050 |
| | TF865 | 341.8 | 147.4 | 428.2 | 61.0 | 1896 |
| TF930 | 367.0 | 158.5 | 453.4 | 72.0 | 1742 | |

Load capacity

10BOP-7



13BOP-7



Electric power steering (EPS)

The EPS system provides effortless steering, reducing operator fatigue and enhancing machine performance and battery life.



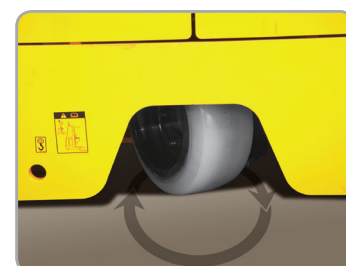
Adjustable pallet clamp

This feature accommodates various pallet width openings. The convenient ratchet type pedal locks and releases the clamp as needed.



Guide rollers

To further enhance the safety of the work area, the optional guide rollers assist the operator when entering and exiting compact aisle configurations.

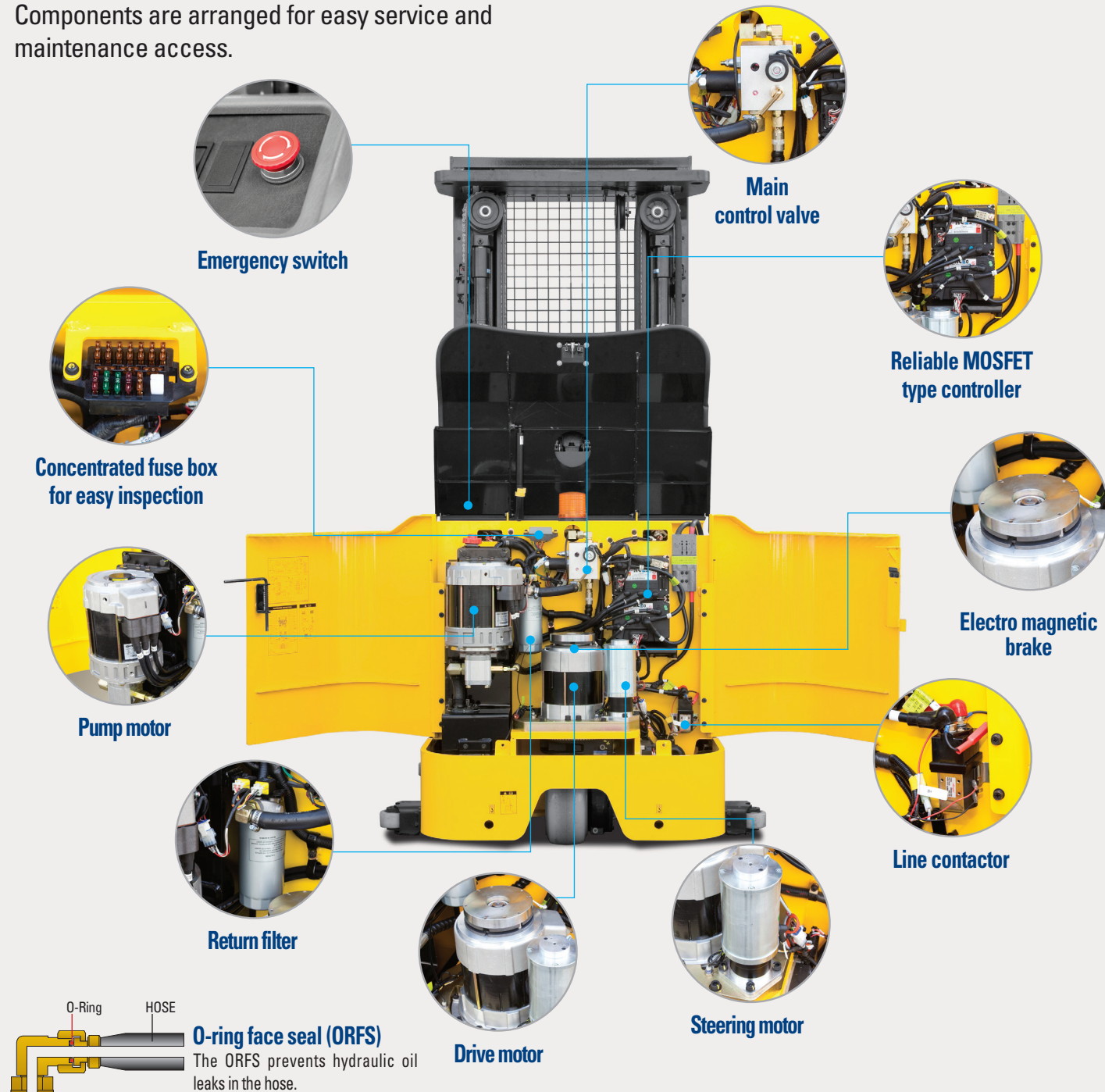


Automatic center position at startup

When the forklift is started, the proximity switch detects the position of the drive wheel and automatically turns the wheel to the center position.

Durability and easy maintenance

Components are arranged for easy service and maintenance access.



Options

- Fork (in): 35.4, 41.3, 53.1, 59.1, 63.0
- Guide roller (wide frame): 48.3 in / 49.4 (57.3) in / 50.4 (58.3) in / 51.3 (59.2) in
- Pallet clamp: Euro pallet, wood pallet
- UL (E)

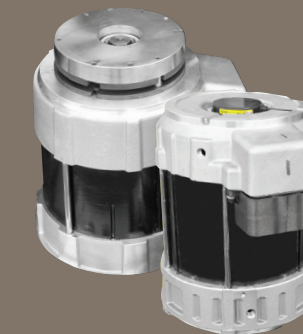
- Beacon lamp (amber, blue, red)
- Battery: 10BOP-7 (400AH, Compartment)
13BOP-7 (500AH, Compartment)
- Additional lift

High technology ZAPI controller

The 8 KHz high-frequency controller provides smooth, quiet operation and protection for low and high voltage, overheating and fault recording.

Energy efficiency

- H (High) mode: 100%
- N (Normal) mode: 110%
- E (Economic) mode: 120%



Drive and pump motors

The efficient AC motor delivers reliability, while the optimized motor design delivers low noise levels for quieter operation. The temperature sensor ensures longer motor life.



*Photos may include optional equipment.

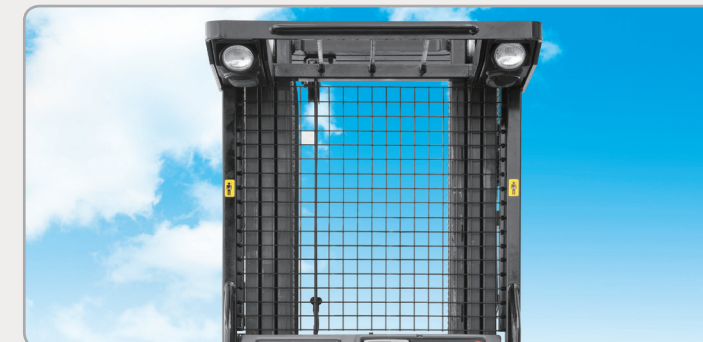
Comfortable operation

The ergonomic design reduces fatigue and increases operator efficiency.



Steering wheel

The newly designed steering control, coupled with a new electric power steering control, provides exceptionally smooth and precise steering for tight spaces.

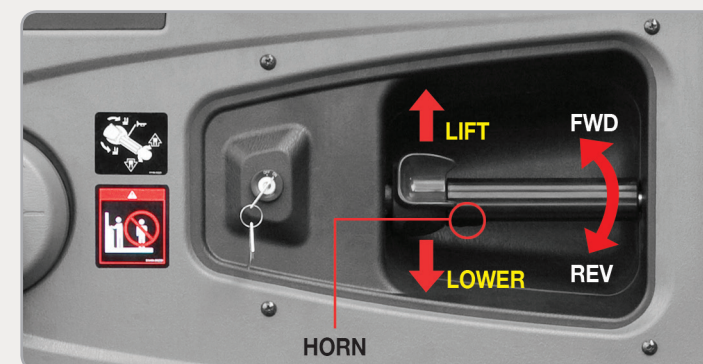


Wider mast view

The wider mast view delivers added visibility, allowing the operator to work with increased safety and accuracy.



Safety belt and side bar



Multifunctional control lever

The ergonomic control lever allows the operator to raise and lower the platform, and control the travel function and horn, with just one hand.



Self-diagnostic LCD monitor

The monitor provides a clear, well-lit view of the system's operation in all environments. The operator can monitor operation error, system fault, battery level and hour meter, along with a variety of other machine functions.

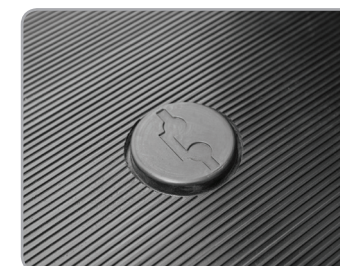
Storage box space

For improved operator convenience, additional storage space is available throughout the cab.



Strong overhead guard

Exceeding CE and ASME/ANSI B56.1 regulations, the overhead guard offers optimal protection during hazardous work.



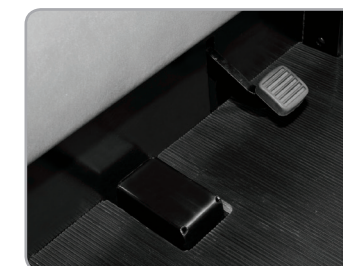
Low profile brake release

The operator platform foot brake release can be engaged with minimal effort.



Operator conveniences

The cab lamp, work lamp and cooling fan provide added operator convenience and comfort.



Pallet clamp pedal

The pallet clamp can be locked and released simply by pushing the pedal.