

# Make It Yours

We offer a wide range of optional equipment to tailor your UniCarriers stacker to meet the demands of your specific applications and the needs of your operators.



• Mast-Mounted LED Work Lights



• Manual Hydraulic Function Levers\*



• Strobe Light



• On/Off Toggle Switch

- Travel Alarm
- Side Shifters
- Internal Hose Reeving
- Polished & Tapered Forks
- Various Drive Tire Options (WSX)
- Battery Gate Interlock Switch (for WSX 13.5" compartment only)



• Multi-Function LCD Display



## Reliability. It's the defining trait of our company and our forklifts.



UniCarriers' roots extend back over 100 years, and over that time, strong, reliable performance has always been the hallmark of our organization, our people and our equipment.

Today, our unrivaled reliability continues to provide UniCarriers' customers with a competitive edge. And together, we move the merchandise that moves world commerce with greater efficiency, economy and reliability.

When it comes to providing forklifts that make a difference for our customers and theirs...

**We Never Quit.**

Forklifts of Michigan  
www.forkliftsmi.com  
616-455-2376



SB-WSX/WCX 07-2015 Printed in U.S.A.

UniCarriers® is a registered trademark of UniCarriers Corporation. UniCarriers Americas Corporation reserves the right to make product changes relating to colors, equipment, specifications or available options without notice. For more information, contact your UniCarriers representative.



Walkie Straddle Stackers  
Walkie Counterbalance Stackers

24 Volt AC-Powered  
3,000 & 4,000 lbs. Capacities

WSX & WCX Series

\* Lift/Lower/Tilt Control and Auxiliary Hydraulic functions available. Manual lift/lower and tilt levers are standard on the WCX.



# WSX & WCX Series Applications

Capacities of up to 2 tons...lift heights up to 18 feet...fluid, virtually effortless maneuverability, UniCarriers stackers have all the performance specs you require for:

- Narrow Aisle Applications (WSX)
- Tight Operating Environments (WSX)
- Trailer Loading / Unloading (WCX)
- Load Transfer/Stacking (WCX)



Look for this symbol — it identifies a UniCarriers forklift feature that provides a proven performance advantage as compared to competitive trucks.



## NEVER QUIT.

It defines our forklifts and the company that builds them.

Over the course of a century, the company known as UniCarriers took shape. As we grew and evolved into a US manufacturer with a global reach in nearly 100 countries worldwide, much has changed, but one thing hasn't: our mission. UniCarriers is committed to providing you with the ultimate in reliability, performance, and value.

And that commitment can be seen in these versatile UniCarriers stackers:

The WSX is a versatile, hard-working straddle stacker that easily operates in tight aisles with heavy loads — making it the productive choice for any application that demands a highly agile and maneuverable machine.

The WCX — our counterbalance model — is a workhorse built to handle heavier loads, reach higher heights and do the job of larger, more expensive sit down trucks.



### Up Your UpTime

Discover reliability features that cut downtime and keep your business up and running



### Power & Performance

AC drive motors and controllers are only the beginning of our performance advantages



### Control Freak

Advanced features provide control to manage costs and improve productivity



### Play It Safe

Safety is everybody's business, and UniCarriers is all business when it comes to safety



### Sweet Savings

The WSX and WCX are both designed to lower ownership costs year after year after year



### Comfort Zone

Your operators and your entire operation will benefit from our comfort & productivity features



### Make It Yours

Already well appointed, you can customize our stackers to meet your specific needs



To learn more, and a find a dealer near you, visit [UniCarriersAmericas.com](http://UniCarriersAmericas.com)

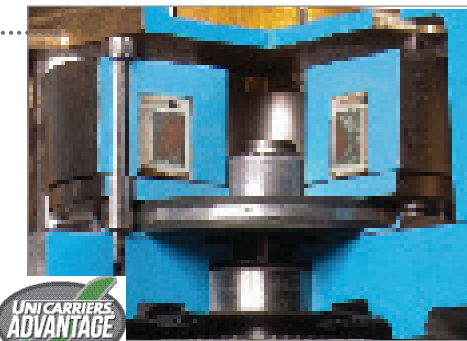
# Up Your UpTime

You'll find WSX and WCX stackers are manufactured with fewer moving parts, designed with easier access to key service points and built to exacting standards for the ultimate in quality, durability and uptime performance



## Smart Electric Brake

Regenerative motor torque, proportional plugging and our spring-applied electronically released disc brake work together to reduce component wear, **extend part life** and **eliminate the need for adjustments**.



## Self-Diagnostics

**On-board diagnostics** are readily available through our optional multi-function LCD meter panel — to alert you to potential difficulties, pinpoint the source and troubleshoot problems.



## Fewer Moving Parts

Hall Effect speed and acceleration control simplifies maintenance and limits downtime due to its non-contact design that eliminates mechanical wiping action, potentiometers, and heaters.



## Simply Smarter

The innovative design of these stacker trucks allows digital communication between all operational controls on the steer handle to the truck's controller. This means **multiple signals travel through the same wire**. Plus, every minute the truck is on, it's self-monitoring to assure reliability.



## Built for Serviceability

The design provides easy service access to:

- Drive unit assembly
- Pump motor brushes
- Rotation sensing encoder
- Brake system
- Lubrication fittings

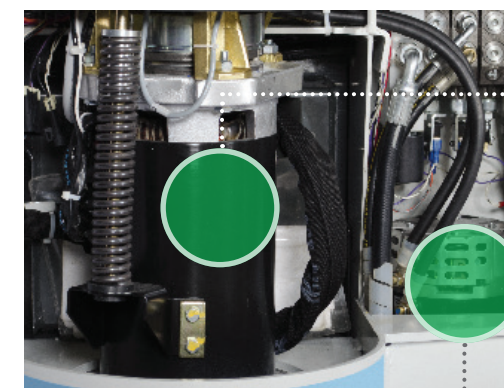
## Built for Reliability

The WSX and WCX are built with reliable components proven on thousands of UniCarriers forklifts in countless applications.

## Driving Efficiency

The AC drive motor is brushless, eliminates forward and reverse contactors, uses fewer components and requires less maintenance to keep you up and running. Both the drive motor and controller feature **thermal protection systems** to slow or shut down the truck in response to high temperatures. And if service is required, **the motor is mounted vertically for easier access**— to get you back to work faster.

Our heavy-duty DC hydraulic lift pump effectively delivers hydraulic oil to a system that features a check valve, flow regulator and return filtering line. This protects the system against environmental contaminants.





# Power & Performance



### Our AC Motor Does More for Less

Greater torque and faster speeds are only the beginning of what our proven 5.2 HP brushless AC drive motor delivers. This 24V system features an advanced motor controller/AC inverter that **distributes consistent power as needed** to the AC drive motor or the heavy-duty DC pump motor. The result? Consistently high performance across the battery range, with **longer run times between charging**.



### A Turn for the Better

You'll get the exceptional stability that comes from the WSX model's wide wheelbase and tight turning radius. **Its 190° steering arc**, ball-bearing steering mechanism, large steering control head, and spring-loaded handle all contribute to easily navigating in the tightest of spaces.

### Reach Higher

At 217 inches (18 feet), our lift height is among the highest in the industry — **sized just right for two and three shelf racking**.

The flat face mast design features rolled steel channels, large cross sections, and thick inner rails for **increased capacity retention**.



Lift Heights  
**6 to 18**  
FEET

An efficient, high-power drive unit combined with an 18-ft lift height provides you with the performance you need to complete tough tasks with more speed, accuracy and productivity.

And while competitive systems feature large, bulky connectors, which house a web of complex wiring, our exclusive CAN System uses just four wires (data in/out and power in/out) in the controller head. The result? **A greatly simplified system with enhanced dependability.**



# Control Freak

Built into each of these stackers are innovative features that provide your operators with extraordinary control of the machine...and that allow you to maintain control over the operations and performance of your organization.



### Easy Does It

The ergonomic layout of the control head includes our **thumb-operated rotary controls**, which can be accessed from either side to easily adjust direction and speed. Our "Soft Touch" switches also allow easy lifting or lowering of loads.



Optional auxiliary lever also shown.

### Complete Control

Hydraulic control levers for lift/lower and tilt functions are conveniently located on the top, right side of the WCX, offering smooth control to feather the load. Levers are available as an option on the WSX.



### Speed Limits

A sealed, non-contact proximity switch detects when the forks are raised above free lift on three-stage masts (or at approximately 47" for 2W masts). This system triggers the controller to automatically reduce travel speed to 1.0 mph (1.5 km/h).

### A Multi-Faceted Display for a Multi-Faceted Truck

The standard Multi-Function Digital Indicator includes a battery discharge indicator with lift interrupt, hour meter gauge, and fault-code display.

For even greater control, add the optional Multi-Function LCD Display (shown) that features:

- **PIN Access:** Personal codes for up to 5 different operators
- **Performance Modes:** Custom settings to match driver capabilities and optimize productivity
- **On-Board Diagnostics:** Fast, easy troubleshooting and adjustment





# Play It Safe



### Maintain Control

The large Safety Reverse Button on the end of the control head automatically reverses the travel direction if operator contact is made.



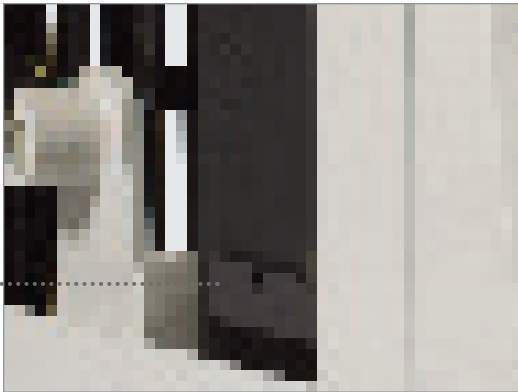
### Bright Ideas

Optional mast-mounted, **low profile LED work lights** provide plenty of illumination to the work area. Amber strobe lights are available as an option for additional workplace awareness.



### Controlled Stop

The Smart Electric Brake engages whenever the handle is in the upper or lower brake range, ensuring the equipment **can only be operated when the handle is in the proper operating position.**



### Security Where It Counts

Adjustable steel battery retainers reduce side-to-side movement, keeping the battery secure. Battery gate interlock switches are available as an option on the 13.5" wide WSX model.

# Sweet Savings

### Quick Access

Both the WSX and WCX are designed to reduce the time and expense of maintenance by providing easy access to critical service points including:

- Major components
- Mast & frame lubrication fittings
- Drive motor encoder
- Pump motor brushes

### Low Maintenance and High Efficiency

Extremely reliable, our 24V brushless drive motor requires little maintenance. Extremely efficient, it **uses less energy per cycle** to stay up and running longer between battery charges. Its maintenance-free electronic horn eliminates rust due to condensation for longer economic life.

### Protection Where It Counts

**Thermal protection systems** that slow or shut down the truck in response to high temperatures protect the drive motor, controller and your investment.

### Putting the Brakes on High Costs

Our Smart Electric Brake uses regenerative motor torque prior to brake actuation. It features fewer parts, never needs adjustment, and extends component life.

### Solid Performance

The rugged frame keeps your stacker up and running — and durable, high gloss, scratch-resistant powder coat paint will keep it looking good.

### Easy Service

Our bolt-on mast design allows quick and easy access for servicing.

### No Tools

The drivetrain and other major components can be easily accessed without tools.



UniCarriers stackers meet all standards of ITSD/ANSI B56.1 Safety Standards for powered industrial trucks. They are ergonomically designed and tested to help operators stay physically comfortable and mentally alert throughout their shift.

From energy efficiency to the savings realized through fewer service requirements and faster maintenance and repair, UniCarriers has designed these machines to save time, money and hassle.

# Comfort Zone



## More Comfort By Design

The spring-loaded handle and control head are ergonomically designed to maximize both operator control and comfort —delivering the ultimate in speed and maneuverability with minimum effort.



- Requiring significantly **less effort** versus twist grip controls, our fingertip design reduces operator fatigue and allows **precise travel speed control**.



## Perfectly Positioned

Manual levers for lift/lower and tilt control are located on the top right of the WCX's power unit where they're easily accessible to operators. Manual lift/lower levels are available as an option on WSX models.

*Optional auxiliary lever also shown*

## Option Availability

● Standard ○ Optional

	WSX	WCX
<b>VEHICLE MANAGEMENT</b>		
Brushless AC drive motor and DC pump motor	●	●
Electronic motor controller system with AC inverter	●	●
Multi-function digital display	●	●
Multi-function LCD display	○	○
Digital CAN-bus communications	●	●
Programmable performance parameters (requires service handset)	●	●
Motor and controller thermal protection	●	●
<b>BRAKE</b>		
Regenerative braking	●	●
Spring applied/electronically released brake system	●	●
<b>MAST</b>		
Side shifter	○	○
Internal hose reeving	○	○
<b>HYDRAULIC SYSTEM</b>		
Manual levers for lift/lower	○	
Manual levers for lift/lower/tilt		●
Manual levers for auxiliary hydraulic control function	○	○
<b>OPERATOR CONVENIENCES</b>		
Ergonomic control handle (with rotary travel and direction thumb control)	●	●
Fingertip control of electronic lift, lower, and horn buttons	●	●
On/Off toggle switch	○	○
Mast mounted, low profile LED work lights	○	○
Amber strobe light	○	○
<b>PROTECTION/SECURITY</b>		
Large reversing button on handle	●	●
Adjustable battery retainers	●	●
Battery compartment rollers with side gates*	○	○
Battery gate interlock switches	○	
Reduced travel speed above free lift	●	●
Travel alarm	○	○
Electric horn	●	●

\* Not available on WSX narrow battery compartment model.

## Specifications

### WSX-WALKIE STRADDLE STACKER MODELS

SHORT MODEL CODES	WSX30S	WSX30	WSX40S	WSX40
Load Capacity - lb (kg)	3000 (1500)	3000 (1500)	4000 (2000)	4000 (2000)
Voltage	24	24	24	24
Tire Type - drive/load	Rubber / Poly	Rubber / Poly	Rubber / Poly	Rubber / Poly
Wheels - drive/load - number	1 x / 4	1 x / 4	1 x / 4	1 x / 4
Maximum Fork Height - in (mm)	152 (3850)	152 (3850)	152 (3850)	152 (3850)
Min Outside Turning Radius - in (mm)	67.8 (1725)	72.4 (1840)	67.8 (1725)	72.4 (1840)
Max Lift Speeds (Loaded/Unloaded) - fpm (mm/sec)	30 (152) / 50 (254)	30 (152) / 50 (254)	30 (152) / 50 (254)	30 (152) / 50 (254)
Max Lower Speeds (Loaded/Unloaded) - fpm (mm/sec)	50 (254) / 50 (254)	50 (254) / 50 (254)	50 (254) / 50 (254)	50 (254) / 50 (254)
Max Drawbar Pull (Loaded/Unloaded) - lb (Kn)	830 (3.7) / 888 (3.9)	830 (3.7) / 888 (3.9)	830 (3.7) / 888 (3.9)	830 (3.7) / 888 (3.9)
Max Gradeability (Loaded) - %	11.4	11.4	11.4	11.4
Battery Compartment Size - in	31.9 x 8.9 x 32	31.9 x 13.5 x 32	31.9 x 8.9 x 32	31.9 x 13.5 x 32

### WCX-WALKIE COUNTERBALANCE STACKER MODELS

SHORT MODEL CODES	WCX30	WCX40
Load Capacity - lb (kg)	3000 (1500)	4000 (2000)
Voltage	24	24
Tire Type - drive/load	Poly / Poly	Poly / Poly
Wheels - drive/load - number	1 x / 2	1 x / 2
Maximum Fork Height - in (mm)	152 (3850)	152 (3850)
Min Outside Turning Radius - in (mm)	69.4 (1765)	69.4 (1765)
Max Lift Speeds (Loaded/Unloaded) - fpm (mm/sec)	30 (152) / 50 (254)	30 (152) / 50 (254)
Max Lower Speeds (Loaded/Unloaded) - fpm (mm/sec)	50 (254) / 50 (254)	50 (254) / 50 (254)
Max Drawbar Pull (Loaded/Unloaded) - lb (Kn)	891 (4) / 1023 (4.6)	596 (2.7) / 1023 (4.6)
Max Gradeability (Loaded) - %	11.2	11.2
Battery Compartment Size - in (mm)	35.75 x 13.5 x 32 (905 x 340 x 815)	35.75 x 13.5 x 32 (905 x 340 x 815)